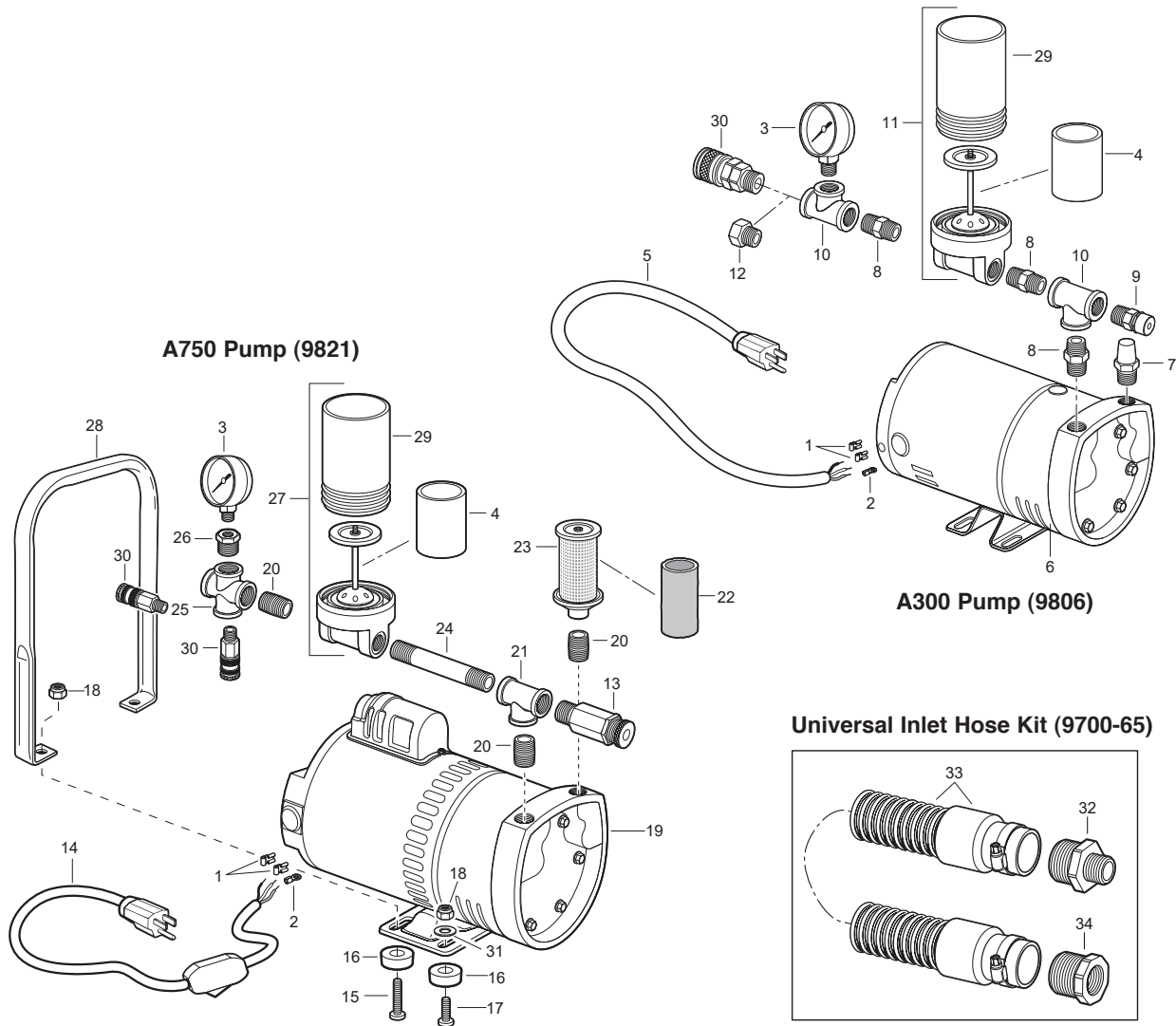


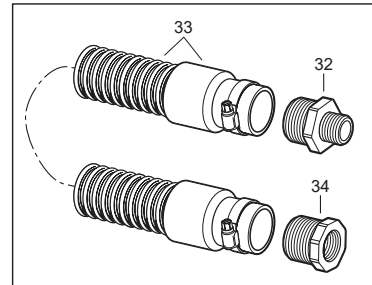


PRODUCT: BREATHING AIR PUMPS (1-2 WORKERS)

**PART NUMBER: 9806 (A-300)
9821 (A-750)**



Universal Inlet Hose Kit (9700-65)



KEY	PART #	DESCRIPTION	KEY	PART #	DESCRIPTION	KEY	PART #	DESCRIPTION
	9806	A-300 Pump	15	9800-68	Machine Screw			Universal Inlet Hose Kit
	9821	A-750 Pump	16	9700-06	Rubber Feet (each)	32	9700-60B	Reducer Nipple
	9822	A-750TE (DISCONTINUED)	17	9800-69	Machine Screw	33	9700-66	Universal Inlet Hose (50 Feet) w/ Cuff
1	9800-75	Flag Connector	18	9800-64	Nylon Lock Nut	34	9700-60A	Bushing
2	9800-76	Ground Connector	19	9821-AA	Pump & Motor Assembly (3/4 hp Motor)		9700-60C	Bushing for 9846-27 (Not Shown)
3	9700-04	Pressure Gauge	20	9000-05	Close Nipple Tube		9000-27	Adapter for 9806 (Not Shown)
4	9700-02	Exhaust Filter Element	21	9000-04	Brass Tee			Available for All Models
5	9512-02A	Cord	22	9700-01	Inlet Filter Element	9700-11	9700-11	Pump Flushing Liquid (Not Shown)
6	9806AA	Pump & Motor Assembly (1/4 hp Motor)	23	9700-08	Inlet Filter Assembly (w/ Filter)	9700-65	9700-65	Universal Inlet Hose Kit (Complete)
7	9700-07	Inlet Filter	24	9000-06	Nipple Tube			Model A-300 Service Kit (Not Shown)
8	9000-25	Hex Nipple	25	9000-09	Galvanized Cross	9700-40	9700-40	Service Kit (Includes Vanes (Set of 4), Filters, and Flushing Liquid)
9	9700-79	Pressure Relief Valve	26	9000-07	Chrome Hex Bushing	9700-41S	9700-41S	Vanes (Set of 4)
10	9000-26	Brass Tee	27	9700-09	Exhaust Filter Assembly (w/ Filter)			Model A-750, A-750TE Service Kit (Not Shown)
11	9700-10	Exhaust Filter Assembly (w/ Filter)	28	9700-05	Carry Handle	9700-50	9700-50	Service Kit (Includes Vanes (Set of 4), Filters, and Flushing Liquid)
12	9000-27	Reducer (Optional)	29	9700-15C	Exhaust Filter Canister	9700-51S	9700-51S	Vanes (Set of 4)
13	9700-03	Pressure Relief Valve	30		Coupler (See Coupler Page)			
14	9512-02	Cord w/ Switch	31	9800-62	Flat Washer			